

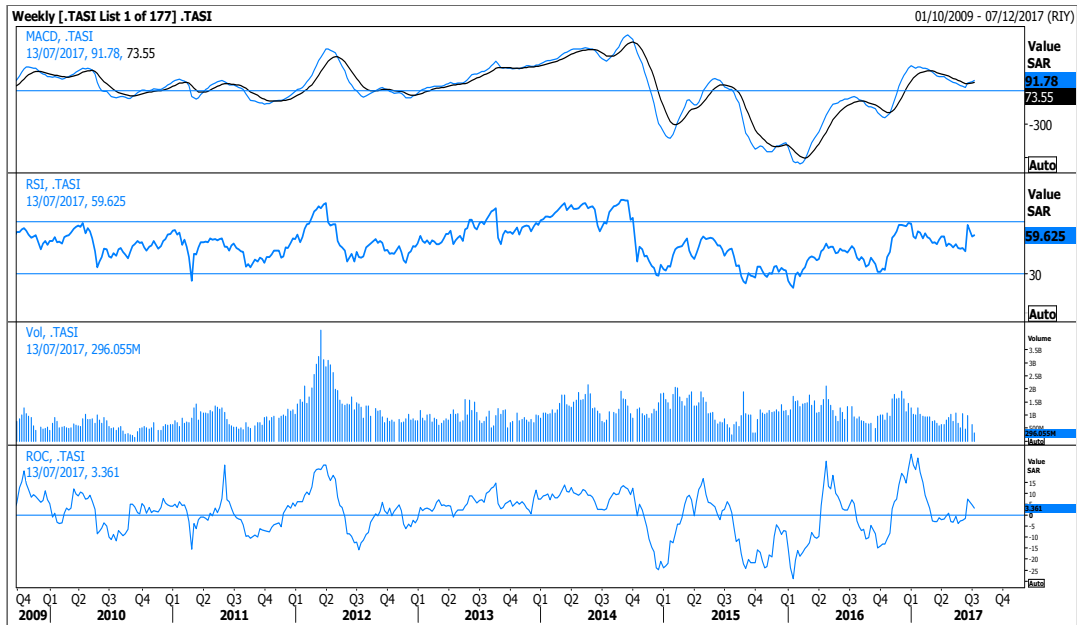
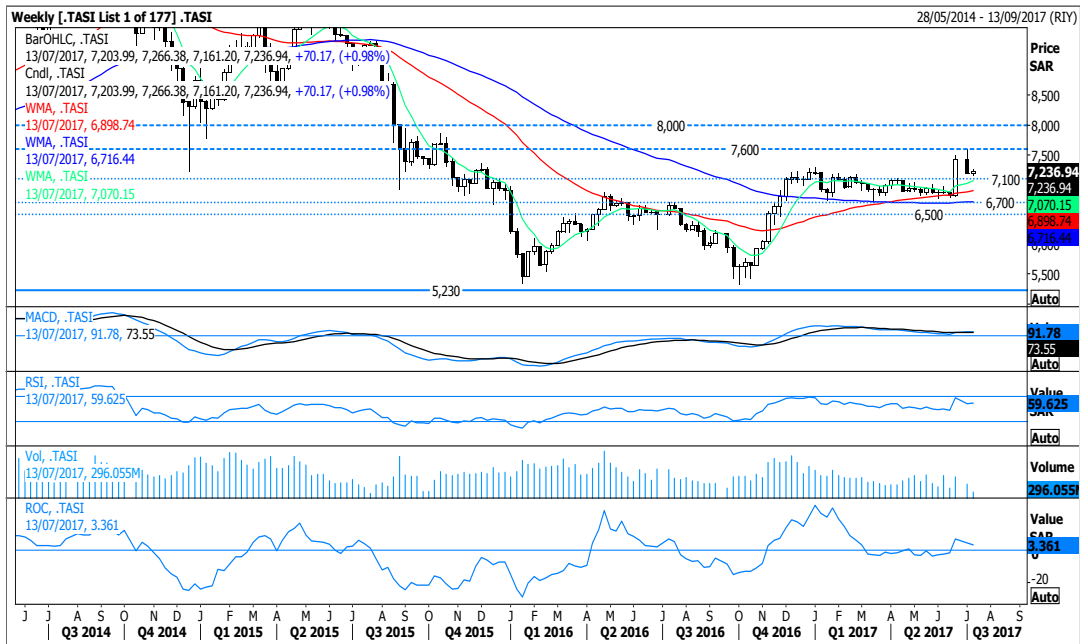
In this Report...

Tadawul Index.....	1
Saudi Cement	2
SPCC.....	2
Alhokair.....	3
Catering.....	3

Saudi Stock Exchange

Tadawul All Share Index <.TASI> closed at 7,236.94 point. The index remains within the positive territory despite last week bearish move after hitting a high last seen on October-2015 at around 7,600 point. It is critical for the market to surpass 7,600 point to attract additional buying potential towards the psychological level at 8,000 point. On the counter side, the nearby support levels are located at 7,100 point, 6,900 point and 6,700 point but only below the last line would change the tone and increase the downside risk. Weekly and daily RSI indicators are looking neutral at present.

Medium-term and long-term investors can stay in the market with a stop-loss below 6,900 point and 6,700 point, respectively.



Faisal Hasan, CFA
 Head - Investment Research
 +(965) 2233 6907
faisal.hasan@kamconline.com

Raed Diab
 Vice President
 +(965) 2233 6908
raed.diab@kamconline.com

Saudi cement Co.

Reuters Ticker: <3030.SE>

Price closed at SAR51.50. The stock approached the strong support level at SAR47.00 but failed once again to break below it. The bulls encounter a resistance level at SAR54.25, which if broken would end a three-month trading range of SAR49.40-SAR54.25 and call for an advance towards SAR59.00 and maybe more to SAR65.25. On the negative side, managing to close below SAR47.00 would trigger a deeper bearish move towards an initial target at SAR40.20.



RSI	37.936
MACD	-2.45
ROC	-14.167
M10	51.90
M50	57.20
M100	59.30
S1	47.00
S2	44.00
S3	40.20
R1	59.00
R2	65.25
R3	71.75

Southern Province Cement Co.

Reuters Ticker: <3050.SE>

Price closed at SAR54.00. The stock saw some relief after hitting a low of SAR49.00, while further strength could still be seen on the coming period. The next level of resistance comes at SAR59.00, while a jump over there would promote SAR64.00 before SAR67.75. On the counter side, a dip below SAR49.00 is unlikely but a break below it would allow a leg down to SAR45.00 (low of year 2009), at which some buying activity is expected to take place.

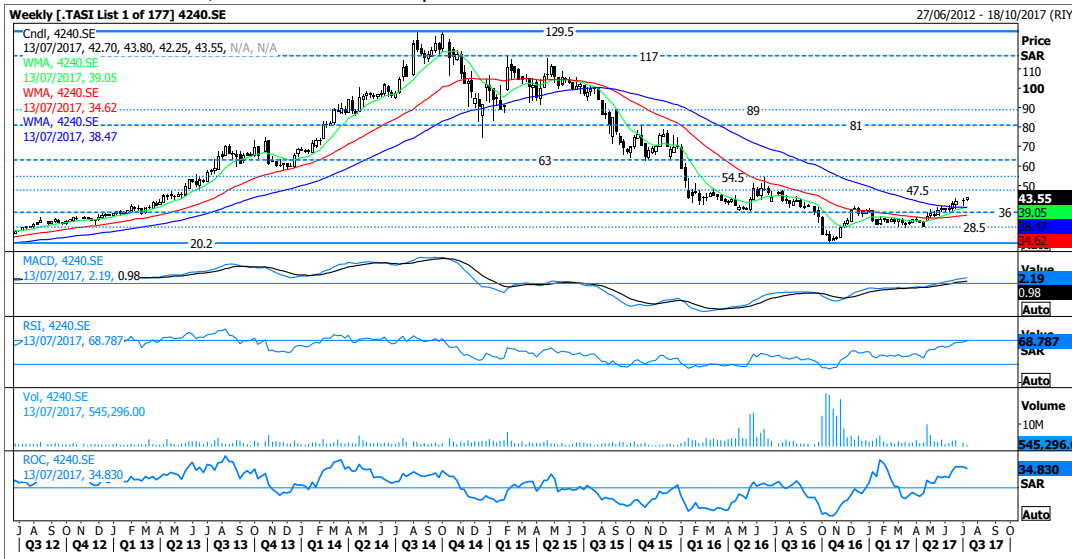


RSI	37.741
MACD	-4.55
ROC	-13.600
M10	52.60
M50	62.10
M100	66.70
S1	53.00
S2	49.00
S3	45.00
R1	59.00
R2	64.00
R3	69.75

Fawaz Abdulaziz Alhokair Co.

Reuters Ticker: <4240.SE>

Price closed at SAR43.55. The current technical picture is positive, as the stock has successfully moved above its MAs. The support area at SAR38.50-SAR36.00 should now prevent the price from a re-test of the horizontal line at SAR28.50, knowing that a sudden break of SAR28.50 would confirm a slippage back to the strong line at SAR20.20. On the opposite side, the next overhead resistance level comes at SAR47.50, while above it will promote SAR54.50.

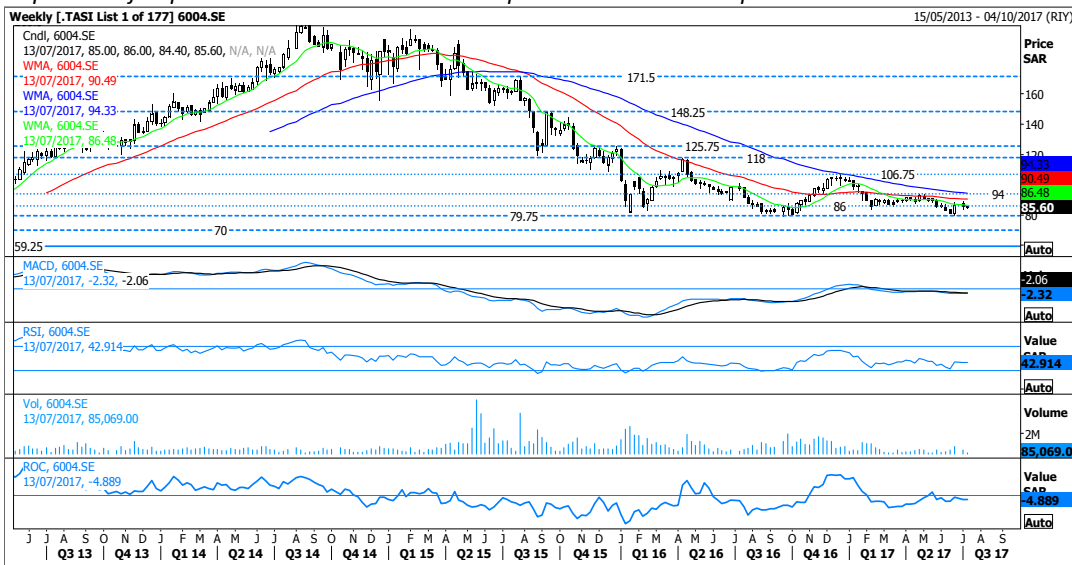


RSI	68.787
MACD	0.98
ROC	34.830
M10	39.05
M50	34.60
M100	38.45
S1	36.00
S2	28.50
S3	20.20
R1	47.50
R2	54.50
R3	63.00

Saudi Airlines Catering Co.

Reuters Ticker: <6004.SE>

Price closed at SAR85.60. The stock is finding difficulties to travel far from its strong support level at SAR79.75 (low of last year), while below it will confirm another leg down towards SAR70.00 and maybe more to SAR59.25. On the other side, resistance levels are intense as we have SAR89.00 and SAR94.00, which if broken would call for a gradual increase to SAR106.75; however, the bulls are required to jump over SAR106.75 to validate a positive continuation pattern.



RSI	42.914
MACD	-2.06
ROC	-4.889
M10	90.50
M50	94.35
M100	86.50
S1	79.75
S2	70.00
S3	59.25
R1	94.00
R2	106.75
R3	118.00

Definitions

Technical Analysis: Aims to identify the direction of prices and reveal any indication of possible changes as soon as possible, so it can be used as much as possible in making buying and selling decisions in the most appropriate time in order to minimize risk and maximize profits.

Trend: The general direction of a market or of the price of an asset.

Resistance: A chart point or range that caps an increase in the level of a stock or index over a period of time.

Support: The price level which, historically, a stock has had difficulty falling below. It is thought of as the level at which a lot of buyers tend to enter the stock.

Breakout: A signal that prices are beginning to trend, either upward or downward.

Bull: An investor who thinks the market, a specific security or an industry is likely to rise.

Bear: An investor who thinks the market, a specific security or an industry is likely to decline.

Channel: is two parallel trend lines either rising or declining.

Consolidation Area: is a sideways movement in prices that interrupts or reverse a trend.

Moving Average (MA): The most common applications of MAs are to identify the trend direction and to determine support and resistance levels.

MACD (Moving Average Convergence-Divergence): A trend-following momentum indicator that shows the relationship between two moving averages of prices.

Relative Strength Index: A technical momentum indicator (ranges from 0 to 100) that compares the magnitude of recent gains to recent losses in an attempt to determine overbought and oversold conditions of an asset.

Overbought: A situation in which the price of a security has risen to such a degree that an oscillator has reached its upper bound. This is generally interpreted as a sign that the price of the asset is becoming overvalued and may experience a pullback.

Oversold: A situation in which the price of a security has fallen to such a degree that an oscillator has reached its upper bound. This is generally interpreted as a sign that the price of the asset is becoming undervalued and may represent a buying opportunity for investors.

Fibonacci: A term refers to areas of support or resistance and to help identify strategic places for transactions to be placed, target prices or stop losses.

On Balance Volume (OBV): is a simple running total of up day (added) and down day (subtracted) volume. If OBV is moving with price, it confirms the current trend. Divergences between OBV and price indicates the price may be due for a reversal.

Disclaimer & Important Disclosures

KAMCO is authorized and fully regulated by the Capital Markets Authority ("CMA, Kuwait") and partially regulated by the Central Bank of Kuwait ("CBK")

This document is provided for informational purposes only. Nothing contained in this document constitutes investment, an offer to invest, legal, tax or other advice or guidance and should be disregarded when considering or making investment decisions. In preparing this document, KAMCO did not take into account the investment objectives, financial situation and particular needs of any particular person. Accordingly, before acting on this document, investors should independently evaluate the investments and strategies referred to herein and make their own determination of whether it is appropriate in light of their own financial circumstances and objectives. The entire content of this document is subject to copyright with all rights reserved. This research and the information contained herein may not be reproduced, distributed or transmitted in Kuwait or in any other jurisdiction to any other person or incorporated in any way into another document or other material without our prior written consent.

In certain circumstances, ratings may differ from those implied by a fair value target using the criteria above. KAMCO policy is to maintain up-to-date fair value targets on the companies under its coverage, reflecting any material changes to the analyst's outlook on a company. Share price volatility may cause a stock to move outside the rating range implied by KAMCO's fair value target. Analysts may not necessarily change their ratings if this happens, but are expected to disclose the rationale behind their view to KAMCO clients.

Any terms and conditions proposed by you which are in addition to or which conflict with this Disclaimer are expressly rejected by KAMCO and shall be of no force or effect. The information contained in this document is based on current trade, statistical and other public information we consider reliable. We do not represent or warrant that such information is fair, accurate or complete and it should not be relied upon as such. KAMCO has no obligation to update, modify or amend this document or to otherwise notify a recipient thereof in the event that any opinion, forecast or estimate set forth herein, changes or subsequently becomes inaccurate. The publication is provided for informational uses only and is not intended for trading purposes. The information on publications does not give rise to any legally binding obligation and/or agreement, including without limitation any obligation to update such information. You shall be responsible for conducting your own investigation and analysis of the information contained or referred to in this document and of evaluating the merits and risks involved in the securities forming the subject matter of this or other such document. Moreover, the provision of certain data/information in the publication may be subject to the terms and conditions of other agreements to which KAMCO is a party.

Nothing in this document should be construed as a solicitation or offer, or recommendation, to acquire or dispose of any investment or to engage in any other transaction, or to provide any investment advice or service. This document is directed at Professional Clients and not Retail Clients within the meaning of CMA rules. Any other persons in receipt of this document must not rely upon or otherwise act upon it. Entities and individuals into whose possession this document comes are required to inform themselves about, and observe such restrictions and should not rely upon or otherwise act upon this document where it is unlawful to make to such person such an offer or invitation or recommendation without compliance with any authorization, registration or other legal requirements.

Risk Warnings

Any prices, valuations or forecasts are indicative and are not intended to predict actual results, which may differ substantially from those reflected. The value of an investment may go up as well as down. The value of and income from any investment may fluctuate from day to day as a result of changes in relevant economic markets (including, without limitation, foreseeable or unforeseeable changes in interest rates, foreign exchange rates, default rates, prepayment rates, political or financial conditions, etc.).

Past performance is not indicative of future results. Any opinions, estimates, valuations or projections (target prices and ratings in particular) are inherently imprecise and a matter of judgment. They are statements of opinion and not of fact, based on current expectations, estimates and projections, and rely on beliefs and assumptions. Actual outcomes and returns may differ materially from what is expressed or forecasted. There are no guarantees of future performance. Certain transactions, including those involving futures, options, and other derivatives, give rise to substantial risk and are not suitable for all investors. This document does not propose to identify or to suggest all of the risks (direct or indirect) which may be associated with the investments and strategies referred to herein.

Conflict of Interest

KAMCO and its affiliates provide full investment banking services, and they and their directors, officers and employees, may take positions which conflict with the views expressed in this document. Salespeople, traders, and other professionals of KAMCO may provide oral or written market commentary or trading strategies to our clients and our proprietary trading desks that reflect opinions that are contrary to the opinions expressed in this document. Our asset management area, our proprietary trading desks and investing businesses may make investment decisions that are inconsistent with the recommendations or views expressed in this document. KAMCO may have or seek investment banking or other business relationships for which it will receive compensation from the companies that are the subject of this document. Facts and views presented in this document have not been reviewed by, and may not reflect information known to, professionals in other KAMCO business areas, including investment banking personnel. United Gulf Bank, Bahrain owns majority of KAMCO's shareholding and this ownership may create, or may create the appearance of, conflicts of interest.

No Liability & Warranty

KAMCO makes neither implied nor expressed representations or warranties and, to the fullest extent permitted by applicable law, we hereby expressly disclaim any and all express, implied and statutory representations and warranties of any kind, including, without limitation, any warranty as to accuracy, timeliness, completeness, and fitness for a particular purpose and/or non-infringement. KAMCO will accept no liability in any event including (without limitation) your reliance on the information contained in this document, any negligence for any damages or loss of any kind, including (without limitation) direct, indirect, incidental, special or consequential damages, expenses or losses arising out of, or in connection with your use or inability to use this document, or in connection with any error, omission, defect, computer virus or system failure, or loss of any profit, goodwill or reputation, even if expressly advised of the possibility of such loss or damages, arising out of or in connection with your use of this document. We do not exclude our duties or liabilities under binding applicable law.

KAMCO Investment Company - K.S.C. (Public)

Al-Shaheed Tower, Khalid Bin Al-Waleed Street- Sharq

P.O. BOX : 28873, Safat 13149, State of Kuwait

Tel: (+965) 1852626 Fax: (+965) 22492395

Email : Kamcoird@kamconline.com

Website : <http://www.kamconline.com>