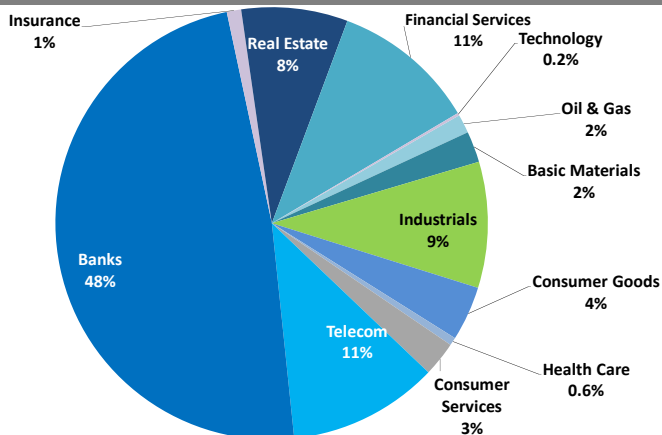


Sector Weight by Market Cap



Top 10 Kuwaiti Companies by Market Capitalization

Company Name	Market Cap. (Mn KWD)	P/E (X)	ROE* (%)
1- National Bank of Kuwait	4,751.7	19.7	9.7%
2- Kuwait Finance House	3,552.1	29.9	7.0%
3- Zain	2,895.4	13.1	14.9%
4- Ahli United Bank - Bahrain	1,380.8	12.0	11.8%
5- Kuwait Food Co. (Americana)	1,238.2	23.7	14.6%
6- Kuwait Projects Co.	1,075.7	25.7	7.7%
7- Agility	1,038.7	22.0	5.2%
8- Boubyan Bank	1,002.2	62.6	5.9%
9- Gulf Bank	1,001.5	30.4	6.7%
10- Commercial Bank of Kuwait	974.2	34.6	4.9%
Total	18,911	20.71	9.3%

*: ROE is calculated based on TTM 1Q-2014 net profit & shareholders' equity as of 31-March-14

Top Movers and Most Active Stocks

Today's Top % Gainers	Close (KWD)	Change (KWD)	Percent Change
Housing Finance Co.	0.026	0.003	10.6%
Zima Holding Co.	0.148	0.010	7.2%
Hilal Cement Company	0.156	0.010	6.8%
Credit Rating & Collection Co.	0.079	0.005	6.8%
Gulf Investment House	0.083	0.005	6.4%

Today's Top % Losers	Close (KWD)	Change (KWD)	Percent Change
Al Mudon International Real Estate Co.	0.104	(0.008)	(7.1%)
Alimtiq Investment Co.	0.072	(0.005)	(6.5%)
Gulf Franchising Co.	0.078	(0.005)	(6.0%)
Fujairah Cement Industries Co.	0.084	(0.004)	(4.5%)
Al Massaleh Real Estate Co.	0.074	(0.003)	(3.9%)

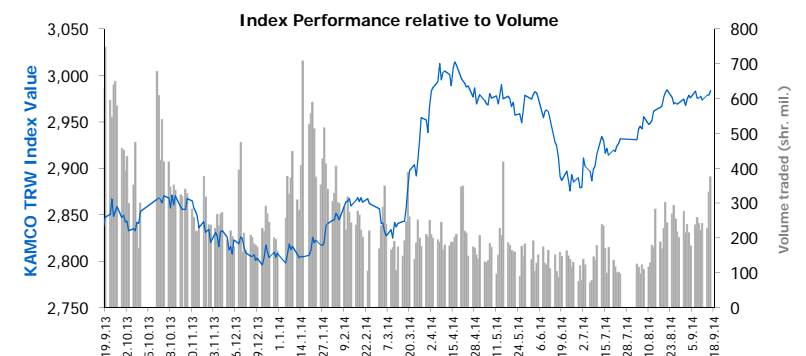
Today's Most Active by Volume	Close (KWD)	Change (KWD)	Volume (Shares)
Housing Finance Co.	0.026	0.003	27,460,520
Ithmar Bank B.S.C	0.050	0.001	26,310,687
Bayan Investment Co.	0.091	0.002	18,928,397
Al-Deera Holding Co.	0.024	0.000	18,011,738
Abyaar Real Estate Development Co.	0.050	0.001	16,789,684

Source: KAMCO Research

Market Capitalization - Sectors' Return

	Market Cap. (KWD Mn)	DTD % Chg	MTD % Chg	YTD % Chg
Kuwaiti Stock Exchange	32,991.2	▲ 0.2%	0.4%	6.1%
Oil & Gas	469.5	▼ (0.1%)	(0.2%)	6.9%
Basic Materials	764.1	▲ 0.2%	(3.0%)	10.7%
Industrials	3,106.3	▼ (0.0%)	1.6%	12.0%
Consumer Goods	1,345.5	▼ (0.0%)	(3.4%)	19.2%
Health Care	201.0	▲ 0.4%	0.5%	(5.9%)
Consumer Services	853.7	▼ (0.6%)	2.7%	(3.6%)
Telecommunications	3,709.1	▲ 1.18%	3.2%	(5.3%)
Banks	15,942.0	▲ 0.1%	(0.5%)	8.9%
Insurance	353.8	▲ 0.1%	0.1%	3.6%
Real Estate	2,626.9	▲ 0.2%	3.0%	(1.2%)
Financial Services	3,557.0	▲ 0.5%	0.6%	6.0%
Technology	62.3	▲ 0.5%	2.5%	(9.3%)

Market Breadth	52	43	98		
Benchmark Return	Closing Value	DTD Chg	MTD % Chg	YTD % Chg	
KAMCO TRWI	2,983.56	4.6	0.2%	0.3%	6.2%
KSE Price Index	7,572.68	28.6	0.4%	1.9%	0.3%
KSE Weighted Index	494.27	1.1	0.2%	0.5%	9.1%
Kuwait 15 Index	1,205.52	2.6	0.2%	0.4%	12.8%
Market Cap (KWD Mn)	32,991	74.3	0.2%	0.4%	6.1%



Market Trading Data and Volatility

Trading Indicators	Today's Value	DTD Chg	DTD % Chg	Average Daily YTD 2014	YTD 2013
Volume (Shrs Mn)	376.1	44.6	13.4%	218.6	587.0
Value Traded (KWD Mn)	37.9	5.0	15.1%	25.1	50.9
No. of Trades	7,299	148.0	2.1%	4,752	9,526

Market Volatility**	Volatility Since January:				
	2014	2013	2012	2011	2010
KAMCO TRW Index	5.2%	5.2%	5.2%	6.7%	7.6%
KSE Price Index	7.4%	10.2%	9.5%	9.3%	9.3%
KSE Weighted Index	7.5%	7.4%	7.6%	9.5%	10.5%

** Annualized Standard Deviation of Daily Returns

Today's Most Active by Value	Close (KWD)	Change (KWD)	Value (KWD)
ZAIN	0.670	0.010	4,660,580
Kuwait Finance House	0.820	0.000	2,660,131
National Bank of Kuwait	0.990	0.000	1,932,682
Bayan Investment Co.	0.091	0.002	1,711,897
Ithmar Bank B.S.C	0.050	0.001	1,295,533

Tuesday, September 16, 2014

KUWAIT 15 INDEX Data

Kuwait 15 Index Constituents	Closing Price			Market Capitalization			Valuation Multiples				ROE	YTD-14 Price Return	YTD-14 Trading Indicators	
	KWD	DTD Chg. (KWD)	D-T-D Return	KWD Mn	Weight in Kuwait 15	Weight in KSE	P/E (X)	P/BV (X)	Yield	Beta			Turnover (Mn Shrs)	Value (KWD Mn)
== National Bank of Kuwait	0.990	0.000	0.00%	4,752	23.2%	14.4%	19.7	1.92	2.8%	1.48	9.7%	20.3%	405.7	394.4
== Kuwait Finance House	0.820	0.000	0.00%	3,552	17.3%	10.8%	29.9	2.08	1.4%	1.50	7.0%	17.7%	409.5	341.3
▲ Zain	0.670	0.010	1.52%	2,895	14.1%	8.8%	13.1	1.96	6.7%	1.61	14.9%	4.3%	321.3	212.4
== Kuwait Food Co. (Americana)	3.080	0.000	0.00%	1,238	6.0%	3.8%	23.7	3.47	2.7%	0.81	14.6%	25.6%	13.9	38.4
== Kuwait Projects Co. (Holding)	0.730	0.000	0.00%	1,076	5.2%	3.3%	25.7	1.99	2.6%	1.59	7.7%	27.0%	167.5	119.8
== Agility (PWC Logistics)	0.900	0.000	0.00%	1,039	5.1%	3.1%	22.0	1.14	4.0%	1.91	5.2%	43.1%	306.3	238.1
▲ Gulf Bank	0.345	0.005	1.47%	1,002	4.9%	3.0%	30.4	2.05	0.0%	0.89	6.7%	(3.2%)	136.7	49.7
== Boubyan Bank	0.510	0.000	0.00%	1,002	4.9%	3.0%	62.6	3.69	0.0%	1.48	5.9%	(2.5%)	56.6	29.9
== Burgan Bank	0.530	0.000	0.00%	920	4.5%	2.8%	42.6	1.92	1.2%	1.34	4.5%	4.7%	251.4	138.2
▼ Ahli United Bank - Kuwait	0.650	(0.010)	(1.52%)	931	4.5%	2.8%	21.3	3.06	2.5%	1.03	14.4%	3.1%	33.1	23.6
== Mabane Co.	1.080	0.000	0.00%	798	3.9%	2.4%	17.6	3.28	2.2%	1.41	18.6%	3.5%	80.0	86.8
== Boubyan Petrochemicals	0.770	0.000	0.00%	392	1.9%	1.2%	NM	1.37	5.5%	1.38	0.4%	31.4%	40.8	30.1
== Kuwait International Bank	0.320	0.000	0.00%	332	1.6%	1.0%	23.7	1.49	2.0%	1.46	6.3%	10.8%	106.5	32.8
▲ National Industries Group	0.234	0.002	0.86%	318	1.6%	1.0%	30.3	0.74	0.0%	1.99	2.4%	5.1%	269.4	65.5
== Qurain Petrochemical Industries Co.	0.244	0.000	0.00%	268	1.3%	0.8%	12.1	0.89	3.9%	1.15	7.3%	14.4%	94.3	23.4
Subtotal- Kuwait 15 Index	1,205.52	2.64	0.22%	20,515	100%	62%	22.1	1.95	2.78%		8.8%	12.8%	2,693	1,824
Remaining of the Market				12,476		38%	17.9	1.02	3.26%		5.7%		35,131	2,516

Kuwait Stock Exchange Daily Bulletin

Tuesday, September 16, 2014

Company	Reuters Ticker	Valuation Multiples				Price (KWD)		MKT Cap (KWD Mn.)	52 Weeks High (KWD)	52 Weeks Low (KWD)	YTD-14 Return #	Daily Trading Data		YTD-14 Capital Turnover	ROE
		Trailing P/E (X)	Trailing P/BV (X)	Dividend Yield	Beta	Closing	DTD Change					Volume (Shrs.)	Value (KWD)		
= Contracting & Marine Services Co.	MARI.KW	21.0	0.70	0.00%	0.57	0.140	0.000	32.1	0.190	0.110	(17.4%)	6,995	989	1.3%	3.3%
= IKARUS Petroleum Industries Co.	IKAR.KW	13.0	0.89	4.73%	0.95	0.200	0.000	157.5	0.200	0.144	34.2%	775,619	155,107	11.9%	6.9%
▼ Al-Safat Energy Holding Co.	SENE.KW	NM	0.54	0.00%	1.34	0.037	(0.001)	22.0	0.056	0.033	(25.5%)	5,604,186	204,181	128.2%	NM
= Independent Petroleum Group	IPGK.KW	11.4	0.87	6.26%	0.67	0.455	0.000	69.3	0.480	0.350	18.3%	5,200	2,366	1.0%	7.6%
= National Petroleum Services Co.	NAPS.KW	12.2	2.12	5.48%	0.39	0.620	0.000	35.7	0.620	0.470	28.4%	14,960	8,678	22.5%	17.4%
▲ The Energy House Co.	ENER.KW	33.0	1.07	0.00%	0.78	0.089	0.001	66.8	0.120	0.078	(16.0%)	500,438	44,889	3.3%	3.2%
▼ Gulf Petroleum Investment	GPIK.KW	12.3	0.84	0.00%	1.09	0.099	(0.003)	35.5	0.134	0.070	28.3%	1,280,299	127,044	265.2%	6.9%
= Burgan Co. for Drilling, Tdg. & Maint.	ABAR.KW	19.5	0.88	0.00%	0.60	0.242	0.000	50.7	0.248	0.176	3.4%	0	0	1.1%	4.5%
Oil & Gas		21.7	0.90	2.93%				469.5			6.9%	8,187,697	543,253		4.1%
▲ Kuwait Foundry Co.	KFDC.KW	26.1	1.04	2.63%	0.50	0.380	0.010	58.5	0.425	0.305	(1.3%)	55,995	20,838	4.2%	4.0%
= Boubyan Petrochemicals Co.*	BPCC.KW	NM	1.37	5.48%	1.38	0.770	0.000	392.2	0.800	0.580	31.4%	69,275	52,631	8.0%	0.4%
= Al Kout for Industrial Projects Co.	ALKK.KW	8.1	1.65	7.84%	0.05	0.510	0.000	45.0	0.550	0.550	0.0%	0	0	0.0%	20.4%
= Qurain Petrochemical Industries Co.	ALQK.KW	12.1	0.89	3.94%	1.15	0.244	0.000	268.4	0.275	0.214	14.4%	132,451	32,508	8.6%	7.3%
Basic Materials		24.6	1.14	4.86%				764.1			10.7%	257,721	105,978		4.6%
▲ Specialities Group Holding Co.	SPEC.KW	11.9	0.79	3.50%	NA	0.190	0.002	28.5	0.208	0.154	(6.2%)	375,590	68,704	6.4%	6.7%
= Kuwait Cement Co.	KCEM.KW	18.4	1.57	4.02%	1.12	0.435	0.000	319.0	0.440	0.360	24.1%	20,743	9,023	0.8%	8.5%
= Refrigeration Industries & Storage Co.	REFR.KW	10.2	1.56	2.83%	0.65	0.350	0.000	31.3	0.355	0.300	14.3%	29,539	10,339	1.0%	15.3%
= Gulf Cable & Electrical Ind. Co.	CABL.KW	11.8	1.10	3.70%	0.91	0.810	0.000	170.0	1.040	0.740	(1.2%)	37,950	30,740	7.3%	9.3%
= Heavy Eng'g Ind. & Shipbuilding Co.	SHIP.KW	11.0	0.73	0.00%	0.97	0.146	0.000	25.1	0.168	0.138	0.9%	208,923	30,809	7.8%	6.6%
= Kuwait Portland Cement Co.	PCEM.KW	13.4	1.81	6.07%	1.15	1.400	0.000	127.3	1.420	1.200	6.1%	1,600	2,220	4.6%	13.4%
= Shuaiba Industrial Co.	PAPE.KW	12.3	0.96	4.51%	0.46	0.248	0.000	16.0	0.355	0.232	6.9%	20,000	4,960	31.1%	7.8%
▲ Metal & Recycling Co.	MRCK.KW	NM	0.57	0.00%	1.13	0.114	0.002	9.4	0.154	0.100	(14.9%)	49,000	5,604	15.4%	NM
= ACICO Industries Co.	ACIC.KW	12.1	1.02	2.79%	0.94	0.340	0.000	88.8	0.370	0.270	24.4%	83,000	28,220	2.5%	8.4%
= Gulf Glass Manufacturing Co.	GGMC.KW	12.6	1.74	5.01%	0.33	0.570	0.000	25.3	0.720	0.530	(6.2%)	0	0	0.4%	13.8%
▲ Hilal Cement Co.	HCCK.KW	27.5	0.71	4.49%	0.14	0.156	0.010	10.9	0.250	0.100	(25.9%)	1,450	204	0.3%	2.6%
= Kuwait Packing Materials Co.	KPAK.KW	14.0	1.73	4.39%	0.23	0.570	0.000	24.1	0.570	0.460	26.9%	0	0	0.1%	12.3%
= Kuwait Building Materials Co.	KBMM.KW	9.6	1.10	2.51%	0.11	0.190	0.000	5.8	0.340	0.150	(31.0%)	0	0	0.1%	11.4%
▲ National Industries Co.	NIBM.KW	40.8	0.93	0.00%	0.50	0.220	0.004	77.7	0.300	0.192	14.6%	40,000	8,760	2.0%	2.3%
▼ Equipment Holding Co.	EQUI.KW	32.8	1.11	0.00%	1.22	0.146	(0.002)	19.9	0.280	0.104	1.4%	1,168,084	168,673	191.5%	3.4%
= National Co. for Consumer Industries	NCCI.KW	50.7	1.04	0.00%	0.33	0.084	0.000	7.6	0.164	0.062	(40.0%)	6,500	551	0.4%	2.0%
= Kuwait Gypsum Manufacturing & Tdg. Co.	GYPK.KW	30.5	1.13	0.00%	0.03	0.170	0.000	5.1	0.186	0.110	(5.6%)	0	0	0.0%	3.7%
▲ Salbookh Trading Co.	SALB.KW	NM	1.04	0.00%	0.63	0.093	0.001	9.8	0.126	0.057	(12.3%)	1,214,928	111,775	156.6%	0.6%
= Agility (PWC Logistics)	AGLT.KW	22.0	1.14	4.02%	1.91	0.900	0.000	1,038.7	0.920	0.640	43.1%	475,500	427,771	26.5%	5.2%
= Educational Holding Group*	EDUK.KW	8.8	1.21	3.64%	0.58	0.164	0.000	40.2	0.180	0.132	6.3%	0	0	0.5%	13.7%
▼ National Cleaning Co.	CLEA.KW	19.4	0.70	0.00%	1.09	0.106	(0.002)	26.5	0.154	0.100	(19.3%)	453,285	48,079	17.0%	3.6%
= City Group Co.	TTGC.KW	8.7	2.10	7.95%	0.38	0.440	0.000	49.7	0.530	0.390	(5.0%)	0	0	0.3%	24.2%
= Kuwait & Gulf Link Transport Co.	KGK.KW	NM	0.47	0.00%	1.57	0.088	0.000	23.3	0.120	0.077	(12.0%)	345,500	30,398	40.6%	0.1%
= Kuwait Co. For Process Plant Const. & Cont.	KCPC.KW	9.0	0.91	3.40%	0.39	0.275	0.000	20.1	0.405	0.260	(14.6%)	0	0	7.7%	10.1%
= Human Soft Holding Co.	HUMN.KW	8.7	1.70	8.17%	0.12	0.400	0.000	48.9	0.550	0.218	101.3%	50	20	1.6%	19.5%
= Nafais Holding Co.	NAFA.KW	4.8	0.65	0.00%	0.19	0.092	0.000	38.8	0.106	0.073	0.0%	65,632	5,973	6.6%	13.6%
= Safwan Trading & Contracting Co.	SAFW.KW	9.7	1.81	6.78%	0.14	0.475	0.000	23.8	0.680	0.410	10.4%	0	0	1.1%	18.8%
▼ Gulf Franchising Co.	GFCI.KW	NM	0.86	0.00%	0.83	0.078	(0.005)	2.5	0.108	0.060	(16.1%)	120,000	9,360	16.4%	NM
▼ National Ranges Co.	MAYA.KW	NM	0.55	0.00%	1.49	0.063	(0.001)	17.7	0.066	0.014	(28.0%)	15,232,747	981,323	698.6%	NM
= Combined Group Contracting Co.	CGCK.KW	38.6	2.44	7.48%	0.73	0.890	0.000	99.3	1.340	0.890	(24.3%)	9,000	8,060	1.6%	6.3%
▲ Mishref General Trading & Contracting Co.	MTCC.KW	22.0	0.87	0.00%	0.57	0.091	0.001	36.4	0.136	0.081	(12.5%)	545,946	49,246	16.1%	4.0%
= United Projects Group	UPAC.KW	10.0	2.18	9.77%	0.38	0.760	0.000	62.7	0.840	0.600	3.5%	0	0	0.6%	21.8%
= ALAFCO Aviation Lease & Finance Co.*	ALAF.KW	13.1	1.14	1.85%	1.26	0.270	0.000	210.5	0.295	0.246	(3.5%)	41,220	11,079	7.0%	8.7%
▲ Mubarrad Transport Co.	MBRD.KW	12.9	0.81	0.00%	1.23	0.089	0.001	14.6	0.093	0.060	18.7%	2,059,561	183,916	134.0%	6.3%
▼ KGL Logistics Co.	LOGK.KW	11.1	0.95	6.96%	1.16	0.130	(0.002)	78.8	0.285	0.122	(23.4%)	217,116	28,269	20.0%	8.5%
▼ Sharjah Cement Co.	SCEM.KW	13.1	0.47	3.92%	0.68	0.097	(0.001)	53.6	0.112	0.089	12.9%	130,000	12,610	23.6%	3.6%

Kuwait Stock Exchange Daily Bulletin

Tuesday, September 16, 2014

Company	Reuters Ticker	Valuation Multiples				Price (KWD)		MKT Cap (KWD Mn.)	52 Weeks High (KWD)	52 Weeks Low (KWD)	YTD-14 Return #	Daily Trading Data		YTD-14 Capital Turnover	ROE
		Trailing P/E (X)	Trailing P/BV (X)	Dividend Yield	Beta	Closing	DTD Change					Volume (Shrs.)	Value (KWD)		
= Gulf Cement Co.	GCEM.KW	9.8	0.95	3.64%	0.95	0.110	0.000	90.3	0.142	0.099	7.4%	139,709	15,368	23.5%	9.7%
= Umm Al-Qaiwain Cement Industries Co.	QCCEM.KW	15.3	0.62	7.29%	0.81	0.096	0.000	34.8	0.118	0.088	10.2%	223,075	21,435	37.7%	4.1%
▼ Fujairah Cement Industries Co.	FCEM.KW	NM	0.42	0.00%	0.85	0.084	(0.004)	29.9	0.102	0.081	(1.2%)	10,332,404	895,592	70.7%	NM
= Ras-Al-Khaimah for White Cement Co.	RKWC.KW	19.3	0.91	2.78%	1.11	0.130	0.000	63.7	0.148	0.112	17.4%	30,315	3,881	3.7%	4.7%
Industrials		16.1	1.10	3.90%				3,106.3			12.0%	33,678,367	3,212,962		6.8%
= Kuwait Slaughter House Co.	KSHK.KW	7.9	1.57	10.71%	0.07	0.226	0.000	7.0	0.265	0.216	6.0%	0	0	0.4%	19.8%
▲ National Slaughter Houses Co.	NSHK.KW	13.1	1.13	8.97%	0.06	0.156	0.004	4.5	0.170	0.122	16.4%	50	8	1.2%	8.7%
= Palms Agro Production Co.	PAPK.KW	8.7	0.61	9.79%	0.37	0.102	0.000	5.3	0.156	0.102	(11.1%)	0	0	0.4%	7.0%
= Livestock Transport & Trading Co.	CATT.KW	20.3	1.13	0.00%	0.67	0.196	0.000	42.5	0.280	0.186	(21.6%)	491	96	10.4%	5.6%
▼ Danah Alsafat Foodstuff Co.	DANK.KW	NM	0.76	0.00%	1.52	0.088	(0.002)	25.4	0.108	0.063	2.3%	4,589,000	404,449	133.8%	NM
= Kuwait United Poultry Co.	POUL.KW	8.9	1.23	4.95%	0.58	0.196	0.000	22.6	0.200	0.122	30.4%	0	0	2.7%	13.8%
= Kuwait Food Co. (Americana)	FOOD.KW	23.7	3.47	2.69%	0.81	3.080	0.000	1,238.2	3.260	2.180	25.6%	346,939	1,068,828	3.5%	14.6%
Consumer Goods		25.2	2.90	2.68%				1,345.5			19.2%	4,936,480	1,473,381		11.5%
= AL-Mowasat Healthcare Co.	MHCK.KW	9.9	0.91	5.43%	0.08	0.184	0.000	17.8	0.200	0.160	21.3%	0	0	0.4%	9.1%
= Advanced Technology Co.	ATCK.KW	31.7	3.44	1.61%	NA	0.930	0.000	139.5	0.940	0.750	3.8%	0	0	7.9%	10.8%
▲ Yiacco Medical Co.	YIAC.KW	14.0	1.23	0.00%	0.93	0.240	0.004	43.7	0.400	0.230	(29.0%)	2,500	597	6.4%	8.8%
Health Care		21.6	2.10	1.60%				201.0			(5.9%)	2,500	597		9.7%
= Kuwait National Cinema Co.	KCIN.KW	14.1	2.08	4.01%	0.23	1.200	0.000	121.3	1.200	0.850	26.2%	0	0	0.7%	14.7%
= Kuwait Hotels Co.	KHOT.KW	49.8	1.47	3.05%	0.13	0.160	0.000	9.2	0.160	0.108	10.0%	0	0	1.7%	2.9%
▼ Sultan Center Food Products Co.	SCFK.KW	20.7	1.61	0.00%	1.88	0.110	(0.002)	63.7	0.118	0.088	11.1%	501,765	55,286	18.7%	7.8%
= Kuwait Cable Vision Co.	KWTV.KW	NM	1.87	0.00%	0.51	0.046	0.000	1.4	0.100	0.037	(24.6%)	0	0	4.5%	NM
= EYAS for Higher & Technical Education Co.*	EYAS.KW	8.7	1.37	5.00%	0.11	0.300	0.000	34.7	0.355	0.280	53.1%	0	0	2.3%	15.7%
▼ IFA Hotels & Resorts Co.*	IFAH.KW	NM	1.78	0.00%	0.57	0.220	(0.004)	139.8	0.620	0.178	(22.8%)	34,520	7,600	6.5%	NM
▼ Oula Fuel Marketing Co.	OULA.KW	14.7	1.12	0.00%	0.46	0.156	(0.002)	59.5	0.230	0.150	(24.1%)	18,679	2,914	7.0%	7.6%
▲ Kuwait Resorts Co.	MUNK.KW	6.1	0.99	4.52%	0.58	0.104	0.002	19.5	0.112	0.065	23.9%	5,262,229	552,366	117.7%	16.3%
▼ Jazeera Airways Co.	JAZK.KW	12.5	2.68	3.33%	0.81	0.450	(0.005)	189.0	0.540	0.400	(6.1%)	82,430	37,243	9.6%	21.5%
= Soor Fuel Marketing Co.	SOOR.KW	14.7	1.16	0.00%	0.60	0.152	0.000	58.6	0.200	0.140	(15.1%)	38,065	5,786	4.5%	7.9%
= Future Kid Entertainment and R.E Co.	KIDK.KW	16.0	0.68	5.60%	0.11	0.118	0.000	13.7	0.128	0.090	5.9%	0	0	0.7%	4.2%
▼ Al-Nawadi Holding Co.	ALNA.KW	9.0	0.87	0.00%	0.10	0.120	(0.002)	19.8	0.146	0.106	6.5%	220,000	26,440	1.7%	9.7%
= Al Rai Media Group Co.	ALRA.KW	6.2	0.97	3.50%	0.76	0.142	0.000	33.1	0.164	0.110	6.5%	42,518	5,917	7.7%	15.7%
▲ Zima Holding Co.	ZIMAH.KW	NM	1.39	0.00%	NA	0.148	0.010	14.8	0.194	0.089	17.5%	50	7	0.4%	NM
= United Foodstuff Industries Group Co.	UFIG.KW	NM	2.74	0.00%	0.01	0.295	0.000	9.8	0.300	0.290	(1.7%)	0	0	0.2%	NM
= Kout Food Group	KOUT.KW	12.2	1.89	3.33%	0.15	0.900	0.000	65.9	0.900	0.700	25.7%	0	0	2.0%	15.5%
Consumer Services		17.9	1.62	2.13%				853.7			(3.6%)	6,200,256	693,560		9.0%
▲ Zain	ZAIN.KW	13.1	1.96	6.73%	1.61	0.670	0.010	2,895.4	0.730	0.610	4.3%	6,960,712	4,660,580	7.4%	14.9%
= National Mobile Telecom Co.	OORE.KW	10.2	1.00	8.07%	1.20	1.540	0.000	776.2	2.000	1.420	(5.4%)	114,717	176,664	0.8%	9.8%
= Hits Telecom Holding Co.	HITS.KW	NM	0.62	0.00%	0.92	0.052	0.000	37.5	0.076	0.040	(21.2%)	3,201,077	164,344	42.7%	NM
Telecommunications		12.7	1.60	6.94%				3,709.1			(5.3%)	10,276,506	5,001,588		12.6%
= National Bank of Kuwait	NBKK.KW	19.7	1.92	2.83%	1.48	0.990	0.000	4,751.7	1.020	0.870	20.3%	1,948,718	1,932,682	8.5%	9.7%
▲ Gulf Bank	GBKK.KW	30.4	2.05	0.00%	0.89	0.345	0.005	1,001.5	0.405	0.330	(3.2%)	1,617,720	558,113	4.7%	6.7%
▲ Commercial Bank of Kuwait	CBKK.KW	34.6	1.71	0.91%	0.83	0.690	0.010	974.2	0.840	0.660	4.5%	5,001	3,451	0.3%	4.9%
▼ Ahli Bank of Kuwait	ABKK.KW	18.4	1.26	3.13%	0.73	0.415	(0.005)	672.0	0.500	0.410	(2.7%)	104,601	43,927	1.6%	6.9%
▼ Ahli United Bank - Kuwait	BKME.KW	21.3	3.06	2.52%	1.03	0.650	(0.010)	930.6	0.790	0.620	3.1%	79,326	51,698	2.3%	14.4%
= Kuwait International Bank	KIBK.KW	23.7	1.49	1.97%	1.46	0.320	0.000	331.9	0.330	0.285	10.8%	1,222,995	391,358	10.3%	6.3%
= Borgan Bank	BURG.KW	42.6	1.92	1.17%	1.34	0.530	0.000	920.0	0.600	0.495	4.7%	654,590	353,398	14.5%	4.5%
= Kuwait Finance House	KFIN.KW	29.9	2.08	1.38%	1.50	0.820	0.000	3,552.1	0.960	0.750	17.7%	3,236,095	2,660,131	9.5%	7.0%
= Boubyan Bank	BOUK.KW	62.6	3.69	0.00%	1.48	0.510	0.000	1,002.2	0.630	0.500	(2.5%)	646,421	329,675	2.9%	5.9%
▲ Warba Bank	WARB.KW	NM	3.02	0.00%	NA	0.275	0.005	275.0	0.375	0.255	(16.7%)	461,121	124,563	27.4%	NM
= Ahli United Bank - Bahrain	AUBK.KW	12.0	1.42	5.26%	0.61	0.230	0.000	1,380.8	0.246	0.190	24.6%	2,262,678	519,087	4.0%	11.8%
▲ Ithmaar Bank	ITHMR.KW	NM	0.98	0.00%	1.25	0.050	0.001	150.0	0.074	0.035	(22.7%)	26,310,687	1,295,533	32.2%	NM
Banks		24.8	1.93	2.05%				15,942.0			8.9%	38,549,953	8,263,615		7.8%

Kuwait Stock Exchange Daily Bulletin

Tuesday, September 16, 2014

Company	Reuters Ticker	Valuation Multiples				Price (KWD)		MKT Cap (KWD Mn.)	52 Weeks High (KWD)	52 Weeks Low (KWD)	YTD-14 Return #	Daily Trading Data		YTD-14 Capital Turnover	ROE
		Trailing P/E (X)	Trailing P/BV (X)	Dividend Yield	Beta	Closing	DTD Change					Volume (Shrs.)	Value (KWD)		
= Kuwait Insurance Co.	KINS.KW	13.2	0.99	6.22%	0.24	0.310	0.000	60.2	0.310	0.270	13.8%	0	0	0.3%	7.5%
= Gulf Insurance Group	GINS.KW	9.7	1.34	5.17%	0.24	0.570	0.000	106.6	0.620	0.520	9.1%	0	0	2.2%	13.8%
= Ahleiah Insurance Co.	AINS.KW	9.4	1.01	6.53%	0.21	0.490	0.000	98.0	0.510	0.460	8.7%	0	0	0.3%	10.7%
= Warba Insurance Co.	WINS.KW	13.5	0.56	4.16%	0.33	0.158	0.000	27.3	0.160	0.100	44.7%	1,340	209	5.2%	4.2%
= Kuwait Reinsurance Co.	KWRE.KW	12.7	0.50	7.14%	0.02	0.140	0.000	21.0	0.150	0.140	0.0%	0	0	0.1%	4.0%
= First Takaful Insurance Co.	FTIK.KW	NM	1.44	0.00%	0.19	0.093	0.000	9.3	0.146	0.085	(22.5%)	0	0	0.0%	NM
▲ Wethaq Takaful Insurance Co.	WETH.KW	12.5	0.63	0.00%	0.10	0.068	0.002	7.5	0.080	0.054	9.7%	115,970	7,767	123.2%	5.1%
= Bahrain Kuwait Insurance Co.	BKIK.KW	6.8	0.95	6.70%	0.01	0.335	0.000	24.0	0.000	0.000	0.0%	0	0	0.0%	13.9%
Insurance		11.6	0.95	5.62%				353.8			3.6%	117,310	7,976		8.2%
▲ Sokouk Holding Co.	SHCK.KW	2.7	0.70	0.00%	1.71	0.094	0.002	53.1	0.132	0.074	(14.8%)	5,572,526	523,129	75.9%	26.2%
▲ Kuwait Real Estate Co.	KREK.KW	10.8	0.59	6.09%	1.35	0.082	0.001	74.4	0.108	0.069	(10.3%)	5,442,136	446,972	81.8%	5.5%
= United Real Estate Co.	UREK.KW	12.8	0.65	7.55%	1.50	0.106	0.000	125.9	0.128	0.097	(3.4%)	222,467	23,582	3.3%	5.0%
▼ National Real Estate Co.	NREK.KW	8.4	0.70	0.00%	1.95	0.158	(0.002)	141.8	0.178	0.138	8.0%	419,066	65,783	23.6%	8.3%
= Salhia Real Estate Co.	SREK.KW	12.8	1.44	4.83%	0.43	0.400	0.000	205.1	0.405	0.335	5.0%	0	0	0.7%	11.2%
= Pearl of Kuwait Real Estate Co.	PEAR.KW	NM	0.58	0.00%	0.64	0.018	0.000	1.8	0.066	0.015	(37.9%)	313,519	5,730	82.3%	NM
▲ Tamdeen Real Estate Co.	TAMK.KW	22.4	0.97	2.44%	0.87	0.310	0.005	121.5	0.320	0.194	63.5%	247,200	76,589	11.3%	4.3%
▼ Ajial Real Estate Entertainment Co.	AREC.KW	57.6	0.32	4.14%	0.46	0.216	(0.002)	38.1	0.236	0.192	7.1%	67,568	14,715	3.4%	0.6%
▼ Al Massaleh Real Estate Co.	MREC.KW	NM	0.50	0.00%	0.68	0.074	(0.003)	17.4	0.126	0.070	(19.6%)	195,556	14,541	5.1%	NM
▼ Arab Real Estate Co.	ARAB.KW	NM	0.43	0.00%	1.53	0.057	(0.001)	29.1	0.072	0.047	(5.0%)	2,657,054	153,124	52.2%	NM
= Union Real Estate Co.	UREC.KW	6.5	0.95	3.64%	0.33	0.178	0.000	35.8	0.178	0.102	71.3%	0	0	0.7%	14.7%
▼ AL-Enma'a Real Estate Co.*	ENMA.KW	10.6	0.68	0.00%	0.86	0.091	(0.003)	41.0	0.097	0.077	5.8%	466,617	42,562	24.3%	6.4%
= Mabaneer Co.	MABK.KW	17.6	3.28	2.19%	1.41	1.080	0.000	797.9	1.240	0.970	3.5%	434,979	466,448	10.8%	18.6%
▼ Injazat Real Estate Development Co.	INJA.KW	NM	0.51	0.00%	1.25	0.078	(0.001)	27.0	0.106	0.069	(17.0%)	932,000	72,864	31.4%	NM
= Investors Holding Group Co.	INVK.KW	NM	0.64	0.00%	1.68	0.017	0.000	18.2	0.034	0.015	(32.0%)	0	0	225.9%	NM
▼ International Resorts Co.	IRCK.KW	55.4	0.67	0.00%	1.55	0.056	(0.001)	8.7	0.114	0.049	(27.3%)	1,533,000	86,779	172.6%	1.2%
= The Commercial Real Estate Co.	TIJK.KW	14.8	0.68	5.99%	1.29	0.100	0.000	170.2	0.106	0.090	15.2%	144,922	14,352	21.2%	4.6%
▲ Sanam Real Estate Co.	SANK.KW	NM	0.72	0.00%	0.44	0.068	0.001	8.3	0.083	0.053	(1.4%)	2,061,505	138,061	90.6%	0.8%
▼ A'ayan Real Estate Co.	AYRE.KW	23.5	0.55	0.00%	1.17	0.102	(0.002)	40.4	0.110	0.085	12.1%	2,261,230	232,068	32.3%	2.3%
= Aqar Real Estate Investment Co.	AQAR.KW	8.6	0.80	5.75%	0.52	0.085	0.000	19.9	0.104	0.075	(4.3%)	0	0	1.0%	9.3%
= Kuwait Real Estate Holding Co.	ALAK.KW	NM	0.97	0.00%	1.02	0.041	0.000	7.7	0.077	0.034	(40.4%)	0	0	27.2%	NM
▲ MAZAYA Holding Co.	MAZA.KW	11.8	0.93	0.00%	1.23	0.124	0.002	85.3	0.144	0.099	27.2%	260,281	31,764	40.5%	7.9%
= Al Dar National Real Estate Co.	ADNC.KW	NM	1.29	0.00%	1.03	0.030	0.000	12.6	0.066	0.029	(43.4%)	0	0	145.8%	NM
= AL-Themar International Holding Co.	THMR.KW	17.6	0.78	5.00%	0.53	0.100	0.000	101.3	0.110	0.070	(9.1%)	0	0	1.0%	4.5%
▼ Tijara Real Estate & Investment Co.	TIJA.KW	15.0	0.79	0.00%	0.54	0.070	(0.001)	26.9	0.087	0.056	(1.4%)	1,115,200	78,098	68.4%	5.2%
▼ Al TAMEER Real Estate Investment Co.	AMAR.KW	NM	0.51	0.00%	0.36	0.048	(0.001)	11.4	0.084	0.036	(19.5%)	79,550	3,779	113.7%	NM
= Arkan Al-Kuwait Real Estate Co.	ARKK.KW	10.8	1.03	4.11%	0.30	0.120	0.000	28.7	0.138	0.108	1.0%	9,000	1,080	0.9%	9.5%
= Al-Argan International Real Estate Co.	ARGK.KW	13.0	0.67	3.72%	0.40	0.182	0.000	48.2	0.220	0.140	16.7%	0	0	3.1%	5.2%
▲ Abyaar Real Estate Development Co.	ABYR.KW	NM	0.62	0.00%	1.52	0.050	0.001	55.4	0.064	0.041	(7.4%)	16,789,684	838,333	98.2%	NM
▲ Munshaat Real Estate Projects Co.	MUNS.KW	1.3	0.64	3.29%	1.61	0.152	0.002	48.9	0.190	0.140	0.6%	1,005,370	151,926	82.5%	48.5%
▲ First Dubai For Real Estate Development	FIRST.KW	16.4	1.89	0.00%	1.23	0.106	0.006	106.0	0.138	0.071	(13.1%)	2,862,113	295,192	17.0%	11.5%
= Kuwait Business Town Real Estate Co.	KBTK.KW	3.9	0.42	0.00%	0.82	0.042	0.000	21.7	0.056	0.025	(31.9%)	187,237	7,864	151.2%	10.7%
▲ Real Estate Asset Management Co.	REAM.KW	30.3	0.83	5.53%	NA	0.126	0.006	13.2	0.146	0.096	26.0%	50	6	0.1%	2.7%
▼ MENA Real Estate Co.	MENK.KW	NM	0.63	0.00%	0.93	0.047	(0.001)	9.2	0.065	0.040	(14.5%)	2,103,000	99,647	70.3%	NM
▼ Al Mudon International Real Estate Co.	ALMK.KW	18.8	0.54	0.00%	0.40	0.104	(0.008)	10.4	0.260	0.074	(33.3%)	11,191,527	1,166,827	560.8%	2.9%
▼ Real Estate Trade Centers Co.	MARA.KW	NM	0.26	0.00%	NA	0.046	(0.002)	5.3	0.076	0.039	(24.6%)	10,000	460	27.8%	NM
▼ Kuwait Remal Real Estate Co.	REMAL.KW	13.7	0.56	0.00%	NA	0.088	(0.002)	26.9	0.210	0.077	(16.6%)	5,895,318	520,878	106.3%	4.1%
= Mashaer Holding Co.	MASK.KW	10.6	0.72	8.33%	1.01	0.180	0.000	32.3	0.242	0.162	(14.5%)	10,000	1,800	5.1%	6.8%
Real Estate		13.9	0.97	2.73%				2,626.9			(1.2%)	64,489,675	5,574,952		6.9%
= Kuwait Investment Co.	KINV.KW	7.1	0.60	0.00%	1.07	0.148	0.000	81.6	0.180	0.122	12.1%	4,920,526	704,409	16.4%	8.5%
= Commercial Facilities Co.	FACI.KW	11.7	0.97	6.70%	0.88	0.295	0.000	158.3	0.300	0.265	14.5%	9,720	2,867	6.4%	8.3%
▲ Int'l Financial Advisors Co.	IFIN.KW	NM	0.50	0.00%	1.44	0.060	0.001	43.2	0.112	0.050	(39.4%)	2,968,451	175,151	164.2%	NM
▲ National Investment Co.	NINV.KW	18.8	0.76	3.00%	1.48	0.164	0.002	143.7	0.170	0.138	5.6%	2,115,500	346,943	11.0%	4.0%

Kuwait Stock Exchange Daily Bulletin

Tuesday, September 16, 2014

Company	Reuters Ticker	Valuation Multiples				Price (KWD)		MKT Cap (KWD Mn.)	52 Weeks High (KWD)	52 Weeks Low (KWD)	YTD-14 Return #	Daily Trading Data		YTD-14	
		Trailing P/E (X)	Trailing P/BV (X)	Dividend Yield	Beta	Closing	DTD Change					Volume (Shrs.)	Value (KWD)	Capital Turnover	ROE
= Kuwait Projects Co.(Holding)	KPRO.KW	25.7	1.99	2.56%	1.59	0.730	0.000	1,075.7	0.800	0.540	27.0%	383,544	279,987	11.4%	7.7%
▲ Coast Invest. & Development Co.	COAS.KW	NM	0.82	0.00%	1.42	0.069	0.002	43.1	0.074	0.040	4.5%	10,531,212	718,230	59.5%	NM
▼ The Securities House Co.	SECH.KW	NM	1.11	0.00%	0.76	0.086	(0.002)	58.5	0.128	0.065	(11.3%)	7,303,834	637,863	63.7%	NM
▼ Securities Group	SGCK.KW	9.8	0.55	0.00%	0.79	0.130	(0.002)	33.2	0.140	0.100	20.7%	14,143	1,859	1.9%	5.7%
▼ Arzan Financial Group For Fin. & Invest.	ARZA.KW	14.3	0.43	0.00%	0.51	0.064	(0.001)	51.4	0.085	0.060	(20.0%)	749,049	48,488	8.1%	3.0%
▲ Kuwait Financial Centre	MARKZ.KW	12.6	0.78	6.20%	1.63	0.146	0.002	77.6	0.164	0.134	0.0%	330,272	47,019	1.7%	6.2%
▼ Kuwait & M.E. Financial Inv. Co.	KMEF.KW	14.1	0.56	0.00%	0.43	0.051	(0.001)	13.5	0.076	0.048	(26.1%)	90,000	4,630	6.2%	4.0%
= Al-Aman Investment Co.	AMAN.KW	14.7	0.96	0.00%	0.72	0.093	0.000	18.3	0.102	0.063	17.7%	1,394,240	127,922	89.0%	6.5%
▲ First Investment Co.	OLAK.KW	NM	0.78	0.00%	1.17	0.112	0.002	72.9	0.112	0.081	9.8%	895,598	98,516	22.0%	NM
▲ Al-Mal Investment Co.	MALK.KW	NM	0.73	0.00%	1.67	0.042	0.002	21.9	0.064	0.036	(25.9%)	9,284,436	380,687	67.9%	NM
▲ Gulf Investment House	GIHK.KW	NM	0.82	0.00%	1.04	0.083	0.005	13.6	0.083	0.022	(41.1%)	4,878,140	402,530	264.2%	NM
▼ A'ayan Leasing & Investment Co.	AAYA.KW	3.4	1.16	0.00%	1.35	0.084	(0.001)	69.0	0.090	0.060	25.4%	8,231,906	699,596	62.2%	34.0%
▲ Bayan Investment Co.	BAYK.KW	11.8	0.97	0.00%	1.88	0.091	0.002	35.7	0.138	0.064	(6.2%)	18,928,397	1,711,897	138.7%	8.2%
▼ Osoul Investment Co.	OSUL.KW	NM	0.76	0.00%	1.08	0.079	(0.001)	14.9	0.099	0.068	3.9%	546,805	43,790	99.8%	0.6%
▲ Kuwait Finance & Investment Co.	KFSK.KW	7.4	0.63	0.00%	0.45	0.075	0.001	23.0	0.099	0.067	(19.4%)	60,000	4,490	3.9%	8.5%
▲ KIPCO Asset Mgt Co. (KAMCO)	KAMC.KW	10.1	0.85	3.72%	0.52	0.122	0.002	32.1	0.144	0.098	0.8%	20,000	2,420	2.2%	8.4%
▼ National International Holding Co.	NIHK.KW	9.7	0.41	6.93%	0.23	0.070	(0.001)	14.9	0.087	0.064	(6.7%)	925,771	65,159	118.9%	4.3%
▲ Housing Finance Co.	ISKN.KW	0.7	0.65	0.00%	0.34	0.026	0.003	7.8	0.070	0.023	(27.8%)	27,460,520	683,144	219.4%	93.1%
▲ Al Madar Finance & Investment Co.	MADR.KW	1.7	0.68	0.00%	0.55	0.058	0.001	12.4	0.066	0.041	7.4%	2,300,186	132,195	21.8%	40.1%
= Al-Deera Holding	DEER.KW	NM	0.67	0.00%	0.78	0.024	0.000	17.9	0.076	0.021	(63.1%)	18,011,738	434,714	206.0%	NM
= Al Salam Group Holding Co.	SAGH.KW	66.5	0.76	0.00%	0.94	0.100	0.000	25.7	0.196	0.079	(32.4%)	1,909,889	192,195	69.0%	1.2%
= Ektitab Holding Co.	EKTT.KW	NM	0.64	0.00%	1.58	0.055	0.000	17.5	0.086	0.043	(25.7%)	640,975	34,996	115.7%	NM
▲ Al Qurain Holding Co.	QURK.KW	25.1	1.48	0.00%	1.43	0.046	0.003	13.6	0.054	0.026	19.5%	6,616,803	302,568	107.0%	5.9%
▼ Al Madina For Finance & Investment Co.	MADI.KW	NM	0.54	0.00%	1.35	0.042	(0.001)	17.1	0.058	0.033	1.2%	7,922,110	335,751	163.4%	NM
▼ NOOR Financial Investment Co.	NOOR.KW	4.4	0.91	0.00%	1.82	0.116	(0.004)	47.9	0.160	0.104	12.2%	1,676,508	198,394	49.0%	20.6%
= Tamdeen Investment Co.	TAMI.KW	21.1	0.86	2.32%	0.87	0.370	0.000	115.4	0.380	0.172	115.3%	0	0	14.3%	4.1%
= Kuwait Bahrain Int'l Exchange Co.	EXCH.KW	9.2	1.09	6.33%	0.39	0.158	0.000	7.3	0.204	0.148	(6.7%)	0	0	0.2%	11.9%
▲ Taiba Kuwaiti Holding Co.	DAMK.KW	6.8	0.64	0.00%	0.41	0.080	0.004	14.4	0.080	0.055	22.1%	5,000	400	1.6%	9.3%
= Kuwait Syrian Holding Co.	KSHC.KW	11.5	0.46	0.00%	1.66	0.027	0.000	8.0	0.048	0.022	(36.9%)	7,180,561	193,194	97.1%	4.0%
= Strategia Investment Co.	STRAT.KW	7.4	0.78	0.00%	0.95	0.085	0.000	25.5	0.090	0.067	10.4%	0	0	0.1%	10.5%
= Kuwait China Investment Co.	KCIC.KW	NM	0.57	0.00%	1.56	0.060	0.000	48.0	0.071	0.054	(7.7%)	36,486	2,153	8.1%	0.0%
= Manafae Investment Co.	MANF.KW	NM	0.75	0.00%	0.44	0.062	0.000	12.5	0.068	0.060	(7.5%)	0	0	3.9%	NM
▲ Gulf North Africa Holding Co.	GNAH.KW	30.1	0.57	0.00%	1.50	0.055	0.001	8.3	0.069	0.036	(6.8%)	11,577,479	641,952	232.0%	1.9%
= Amwal International Investment Co.	AMWA.KW	NM	0.56	0.00%	NA	0.050	0.000	8.9	0.068	0.042	(21.4%)	3,926,691	195,723	41.0%	NM
▼ Alimtiq Investment Group	ALIMK.KW	NM	0.48	0.00%	NA	0.072	(0.005)	81.6	0.087	0.061	(1.4%)	9,775,992	720,499	59.4%	NM
▲ Manazel Holding Co.	MANK.KW	NM	1.60	0.00%	2.17	0.061	0.001	43.6	0.074	0.041	(1.6%)	16,707,533	1,019,439	111.1%	NM
▲ National Industries Group	NIND.KW	30.3	0.74	0.00%	1.99	0.234	0.002	318.2	0.275	0.218	5.1%	2,175,205	509,079	19.8%	2.4%
▲ United Industries Co.	UICK.KW	1.9	0.44	20.10%	1.37	0.112	0.002	55.5	0.190	0.106	(11.0%)	118,001	12,764	7.0%	23.5%
▲ Boubyan Int'l Industries Holding Co.	BIHC.KW	NM	0.83	0.00%	1.67	0.098	0.001	29.4	0.124	0.082	0.0%	643,500	63,013	73.8%	NM
= Arabi Holding Group Co.	AGHC.KW	25.4	1.29	0.00%	0.88	0.190	0.000	28.5	0.204	0.168	0.9%	0	0	3.0%	5.1%
▲ Privatization Holding Co.	KPPC.KW	NM	0.46	0.00%	1.47	0.070	0.001	51.7	0.082	0.056	1.4%	3,274,100	227,013	53.3%	0.4%
▲ Credit Rating & Collection Co.	TAHS.KW	NM	1.03	0.00%	0.20	0.079	0.005	13.0	0.142	0.052	(19.4%)	151,500	11,902	1.9%	NM
▲ Jeeran Holding Co.*	JEER.KW	NM	0.40	0.00%	0.48	0.070	0.003	10.5	0.102	0.046	(5.4%)	110,370	7,625	22.6%	NM
▲ Egypt Kuwait Holding Co.	EKHK.KW	12.9	1.25	2.19%	1.80	0.280	0.010	273.2	0.320	0.214	14.4%	10,077	2,671	0.4%	9.7%
= Gulf Finance House	GFHK.KW	NM	0.85	0.00%	1.55	0.040	0.000	124.9	0.068	0.031	(20.2%)	9,383,161	370,296	123.7%	1.0%
▼ Inovest	INOV.KW	NM	0.48	0.00%	1.07	0.079	(0.001)	22.6	0.093	0.066	3.9%	1,460,500	115,385	86.9%	NM
Financial Services		29.3	0.93	1.96%				3,557.0			6.0%	207,656,429	12,911,517		3.2%

Kuwait Stock Exchange Daily Bulletin

Tuesday, September 16, 2014

Company	Reuters Ticker	Valuation Multiples				Price (KWD)		MKT Cap (KWD Mn.)	52 Weeks High (KWD)	52 Weeks Low (KWD)	YTD-14 Return #	Daily Trading Data		YTD-14 Capital Turnover	ROE
		Trailing P/E (X)	Trailing P/BV (X)	Dividend Yield	Beta	Closing	DTD Change					Volume (Shrs.)	Value (KWD)		
= Automated Systems Co.	ASCK.KW	10.4	1.41	12.05%	0.40	0.415	0.000	16.6	0.500	0.370	16.3%	0	0	2.7%	13.6%
▲ Al Safat TEC Holding Co.	SAFH.KW	NM	0.98	0.00%	1.29	0.067	0.001	26.8	0.086	0.047	(15.2%)	1,513,551	99,754	39.0%	NM
= Future Communications Global Co.	FUTK.KW	12.9	0.74	11.36%	0.35	0.132	0.000	10.7	0.180	0.116	(0.7%)	0	0	9.0%	5.8%
▼ Hayat Communications Co.	HAYK.KW	NM	0.89	0.00%	0.52	0.088	(0.001)	8.1	0.116	0.073	(10.2%)	274,050	24,116	76.8%	0.3%
Technology		NM	0.99	5.17%				62.3			(9.3%)	1,787,601	123,870		NM
Kuwait Stock Exchange		20.3	1.45	2.96%				32,991.2			6.1%	376,140,495	37,913,249		7.2%

Year-to-Date 2014 Top Movers & Most Active Stocks

YTD Top % Gainers	Close (KWD)	Percent Change
Tamdeen Investment Co.	0.370	115.3%
Human Soft Holding Co.	0.400	101.3%
Union Real Estate Co.	0.178	71.3%
Tamdeen Real Estate Co.	0.310	63.5%
EYAS for Higher & Technical Education	0.300	53.1%

YTD Top % Losers	Close (KWD)	Percent Change
Al-Deera Holding Co.	0.024	(63.1%)
Al Dar National Real Estate Co.	0.030	(43.4%)
Gulf Investment House	0.083	(41.1%)
Kuwait National Real Estate Services & Invest	0.041	(40.4%)
National Co. for Consumer Industries	0.084	(40.0%)

YTD Most Active by Volume	Close (KWD)	Volume (Shrs.)
Gulf Finance House	0.040	3,910,867,374
Investors Holding Group Co.	0.017	2,417,508,359
National Ranges Co. (MAYADEEN)	0.063	1,957,306,125
Al-Deera Holding Co.	0.024	1,533,757,772
International Financial Advisers	0.060	1,182,078,908

YTD Most Active by Value	Close (KWD)	Value (KWD)
National Bank of Kuwait	0.990	394,427,533
Kuwait Finance House	0.820	341,303,719
Agility	0.900	238,102,148
ZAIN	0.670	212,387,951
Gulf Finance House	0.040	194,025,166

Notes: NM: Not Meaningful. NA: Not Available. CP: Current Price, Trailing P/E is calculated based on TTM 1Q-2014 net profits and current market cap. If calculated P/E is negative or greater than 80, it is represented by NM. Trailing P/BV is based on shareholders' equity as of 31-March-2014 and current market cap. Valuation multiples (P/E and P/BV) for companies that have not yet disclosed their 1Q-2014 financials are based on FY-2013 net profits and shareholder's equity as of 31-December-13. Dividend Yield for individual stocks is based on the Full Year 2013 Dividends & current market cap, and the sector's average is a weighted average based on the market cap. Beta is calculated on daily share prices returns against KAMCO TRW Index for the companies which have a minimum trading history of two years. Sectors' Beta is calculated based on five year daily returns against KAMCO TRW Index. DTD: daily change. MTD: Beginning of Current Month to Date YTD: Beginning of Year to Date. KWD: Kuwaiti Dinars. * Companies that vary in their fiscal years are treated separately to adjust for the recent results announcements. #YTD-14 return for individual stocks and sectors is calculated based on the change in market capitalization.

Disclaimer: This document and material contained herewith have been produced, compiled, and issued by KIPCO Asset Management Company KSC Closed (KAMCO). The Company has obtained the information used in this document from sources it believes to be reliable, but the issuer does not guarantee, neither its accuracy nor completeness, nor provides an independent verification of the material contained therein. KAMCO may, from time to time to the extent permitted by law, participate or invest in other financing transactions with the issuers of the securities, perform services for or solicit business from such issuer and/or have a position or effect transactions in the securities or options thereof. KAMCO may, to extent permitted by the applicable Kuwaiti law or other applicable laws and regulations, effect transactions in the securities before this material is published to recipients. The opinions and estimates expressed herein are those of the issuer and subject to change at any time without any prior notice. Accordingly, no representation or warranty, expressed or implied, is made as to and no reliance should be placed on the fairness, accuracy, completeness or correctness of the information and opinions contained in this document. KAMCO accepts no liability for any loss arising from the use of this document or its contents or otherwise arising in connection therewith. This document should not be relied upon or used in substitution for the exercise of sound judgment. KAMCO shall have no responsibility or liability whatsoever in respect of any inaccuracy in or omission from this or any other document prepared by KAMCO for, or sent by KAMCO to any entity, and any such entity shall be responsible for conducting its own scrutiny, investigation, and analysis of the information contained or referred to in this document and of evaluating the merits and risks involved in the securities forming the subject matter of this or other such document.

Opinions and estimates constitute KAMCO's judgment and are subject to change without prior notice. Past performance is not an indicator of future results. This document does not constitute an offer or invitation to subscribe for or purchase any securities, and neither this document nor anything contained herein shall form the basis of any contract or commitment whatsoever. This document is not an offer to sell or a solicitation to buy any securities. It is being furnished to the reader solely for his/her information and may not be redistributed inside Kuwait or by any jurisdiction outside Kuwait where this action is restricted by law. Entities who receive this report should make themselves aware of and adhere to any such restrictions. By accepting receipt of this report, the reader agrees to be bound by the foregoing limitations.